

Leading by fact: removing data barriers to enable enterprise-level decision-making

Leanne Coleman – PMO and project controls lead at Costain

Charlie Davies – Digital growth lead at Costain

Costain at the Project Controls Expo 2021



Deep domain knowledge

Our domain knowledge of infrastructure assets and operations has been built up over more than 150 years of working as trusted delivery partners

Assured deliverability

Our advice is grounded in the understanding of deliverability gained from delivering complex programmes

Strategic partners

Together we co-create the best solutions and increase the impact from investment decisions

Climate change action committed

Working collaboratively with government, clients, partners and the supply chain, we commit to deliver low carbon solutions to every client by 2023

London Bridge redevelopment



HS2



Smart motorways



Anglian Water Strategic Pipeline Alliance



Thames water



Dreadnought Alliance



AWE

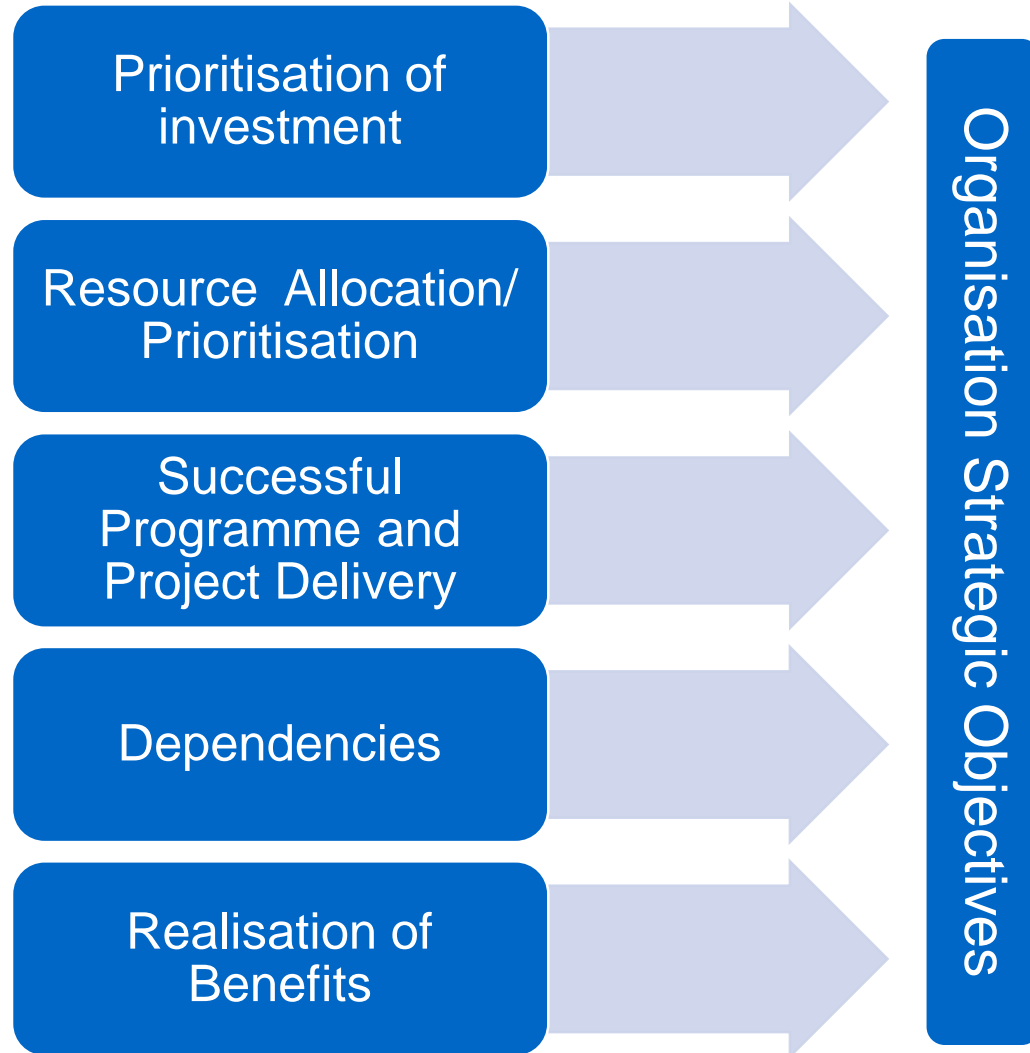


Cdbb National Digital Twin



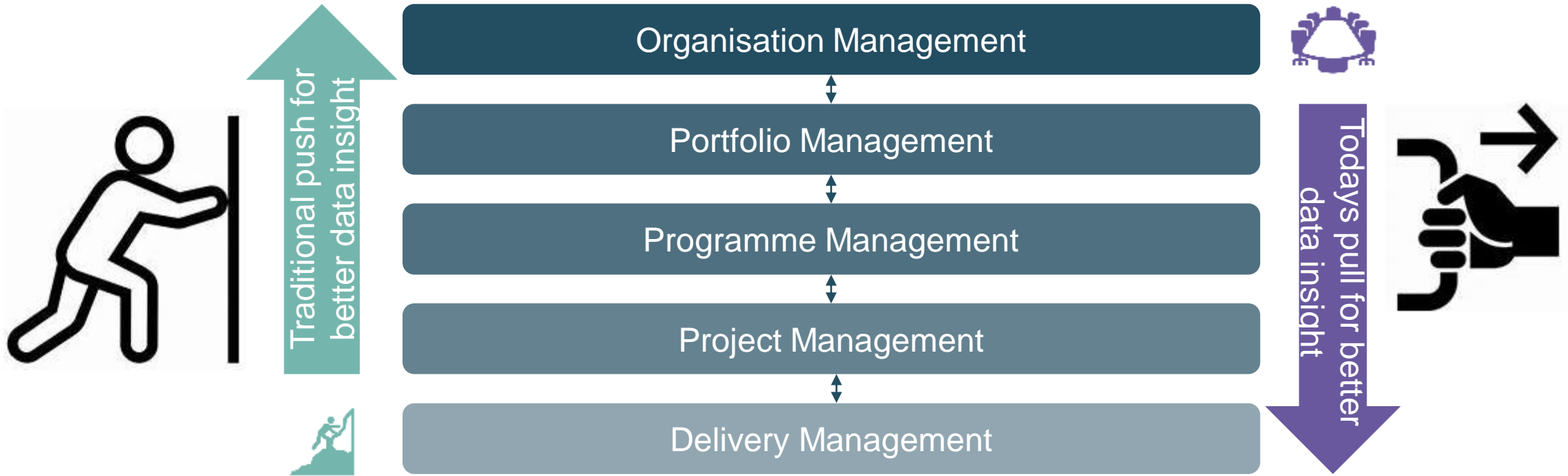
Enterprise-level decision making

COSTAIN



“Strategic decisions are based on
a clear understanding of cost, risk, impact on business as usual and strategic benefit to be realised” (Axelos P30)

Changing data drivers



Why are we all desperately searching for the ‘single source of the truth?’ What are we trying to achieve in our quest for better decision making?



“I haven’t the time to review all of this data”

“I don’t believe what my current reports tell me”

“I spend all my time challenging the quality of the report rather than generating value through decisions and actions”

“The information I receive is out of date so my decisions are ultimately being made on old data”

“I haven’t the technical skills or time to drill down into this data to validate it - but it doesn’t feel or look right”

Decision goals



Improve confidence



Reduce data paralysis

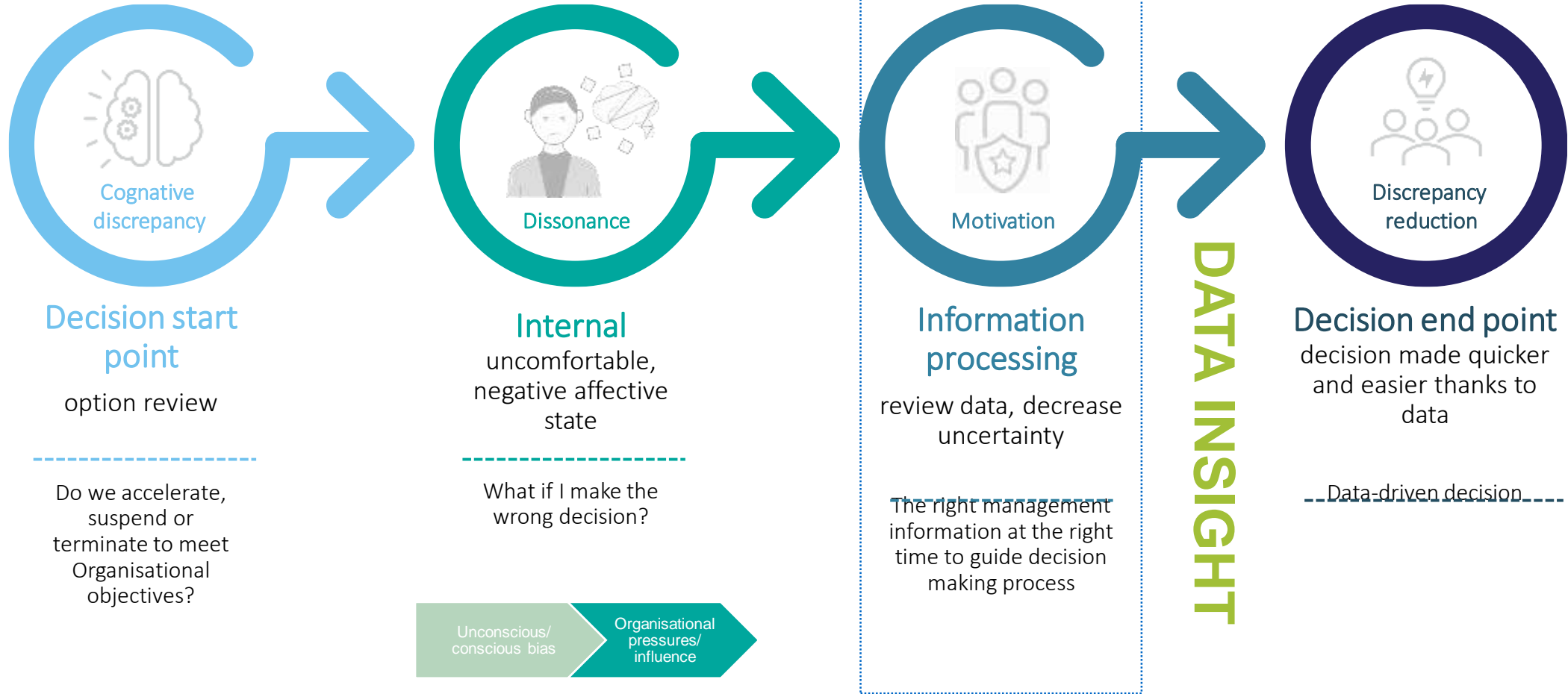


Reduce opportunity for unconscious bias



Improve the speed of decisions

Reduce decision discomfort with data – Four step process



The background features a complex arrangement of overlapping geometric shapes in various shades of blue, purple, and teal. A large white rectangular box is centered on the page, containing the main title text.

Case Study: Enterprise control through intelligent data management

Challenge

- **Big data.**
- **Paper based processes.**
- **Huge legacy IT infrastructure.**
- **No single, integrated hub to derive individual and portfolio value.**

How do we gain control?

A woman with dark hair and glasses is looking down at a laptop screen. The screen displays various data visualizations, including a bar chart and a circular gauge. The background is dark with blurred lights, suggesting an office or data center environment. The overall aesthetic is futuristic and data-driven.

COSTAIN

Personas



Director of UK infrastructure

Situation – Peter attends a meeting at Westminster where he is asked to fact check the previous year spend of a particular project.

Handling – Peter asks the dashboard “Filter on Project X and show me the total spend during 2021”

Result – Dashboard responds and updates, the facts about the spend can be immediately checked, discussed and actions logged.

Key benefits

Intuitive, no training required – When Peter is surprised with a question, he does not have to rely on any technical knowledge to answer it

Address challenges instantly – Peter is able to address any challenge instantly and confidently. Save time and work effectively



Carbon manager

Situation – When reviewing dashboard results, Ahmali notices a sudden spike in carbon usage in one of her large projects.

Handling – Ahmali asks the dashboard “Why are the Carbon Emissions for Project Y so high recently”

Result – Dashboard responds and updates Ahmali with some smart insights. Shows the contributing factors to the change in trend

Key benefits

Natural flow to analysis – Ahmali switches between voice and physical interaction seamlessly using the right method for the situation.

Highlight hidden insights– The dashboard offers insights as to the key drivers behind the numbers giving Ahmali a good starting point for her analysis



Commercial manager

Situation – Alvaro is visiting a customer site where PPE is necessary. He needs to discuss commercial risk of projects should the pandemic force project delay.

Handling – Alvaro launches the dashboard via the browser on his tablet and asks “Show me the latest commercial update for all projects for customer Z”,

Result –The dashboard is able to offer the relevant information and subsequent navigation in response to voice.

Key benefits

Low-touch usage –Dashboard capabilities are available via voice commands. Reduces the need for physical interaction with devices e.g when wearing gloves.

Collaborative Analysis – No barriers to discuss data. Alvaro and his customers can navigate the dashboard together using their voice.

What the IICC will do for me?



Empowers users to have the information needed anytime, anywhere.

Ensures all are working from a single source of truth.

Uses leading indicators and early trend identification.

The IICC brings all of your data across projects and systems into **one** place at a fraction of the overhead of traditional data processing techniques to enable data driven decisions.

Significantly reduces time spent processing and analysing data giving more time to deliver.

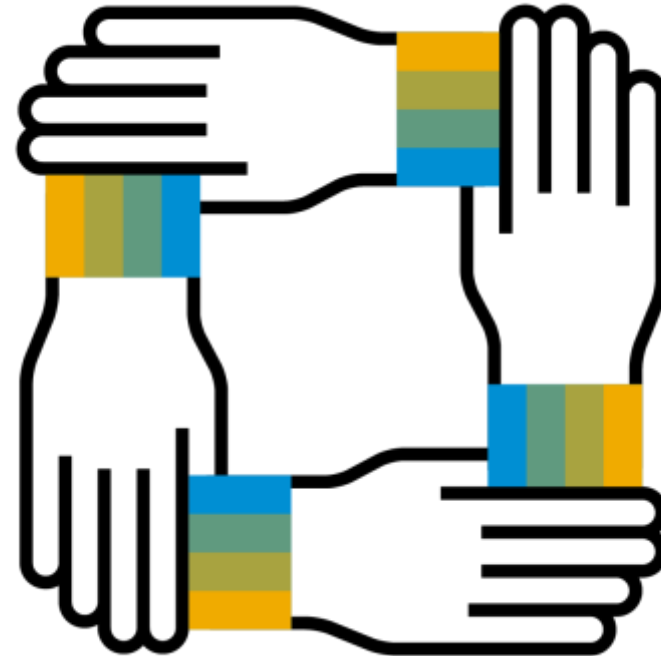
Automates data collection.

Employs a data hierarchy to ensure targeted insight.

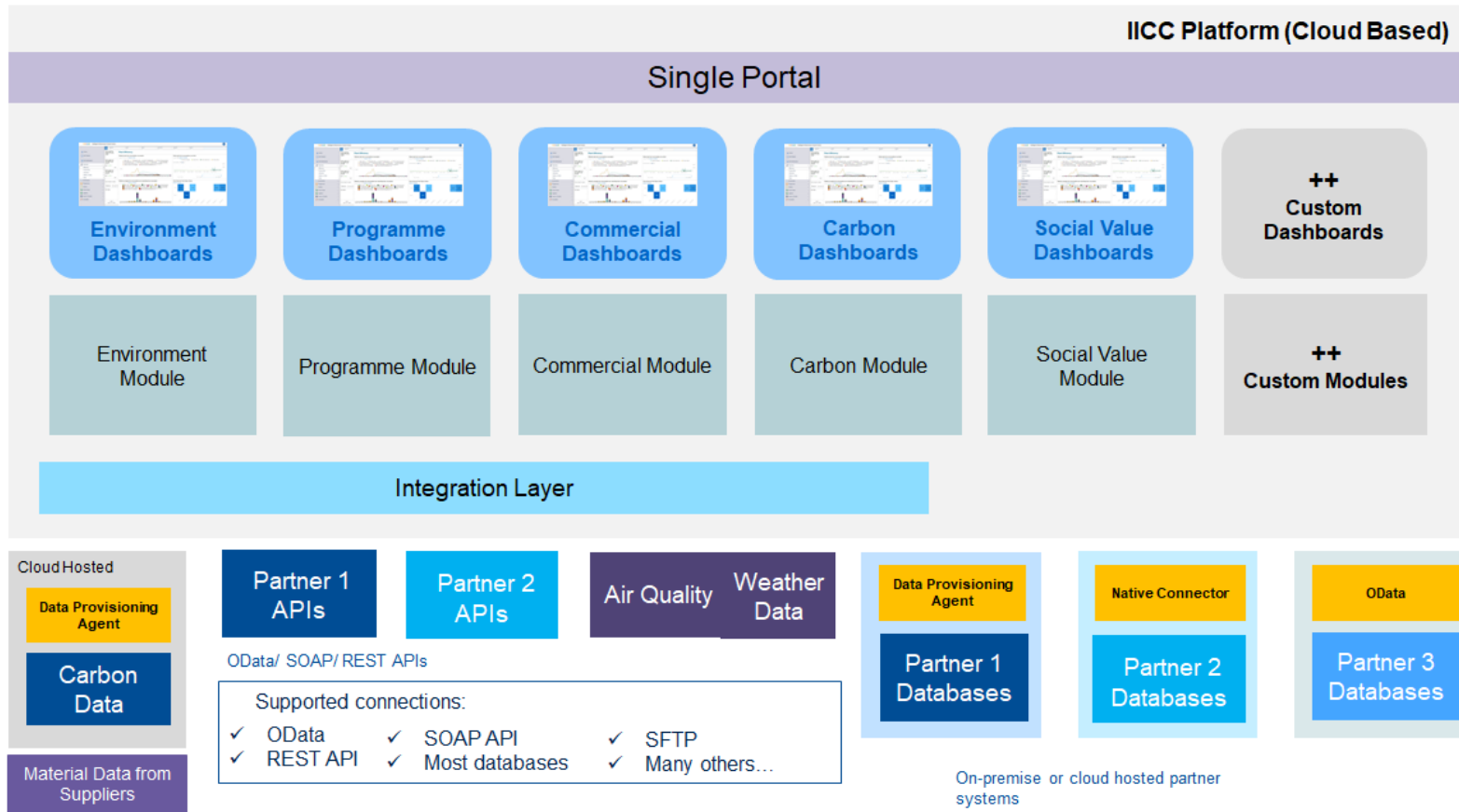
Approach to the project



- **Firm foundations.**
- **Agile approach.**
- **High stakeholder engagement.**
- **Time, cost and quality over features.**



How?



Display complex analysis without latency.

Dive through visualisations to explore the data.

Web hosted and accessible.

Benefits realisation

71%

Additional access to siloed data (from 16% to 87%) to make better informed decisions and increase accuracy of business cases.

8x

Pace of innovation transfer to capture carbon efficiencies through data and having a full programme portfolio view.

22 %

Increase in asset productivity savings when construction equipment effectiveness is calculated on key assets and facilities in real time.

57%

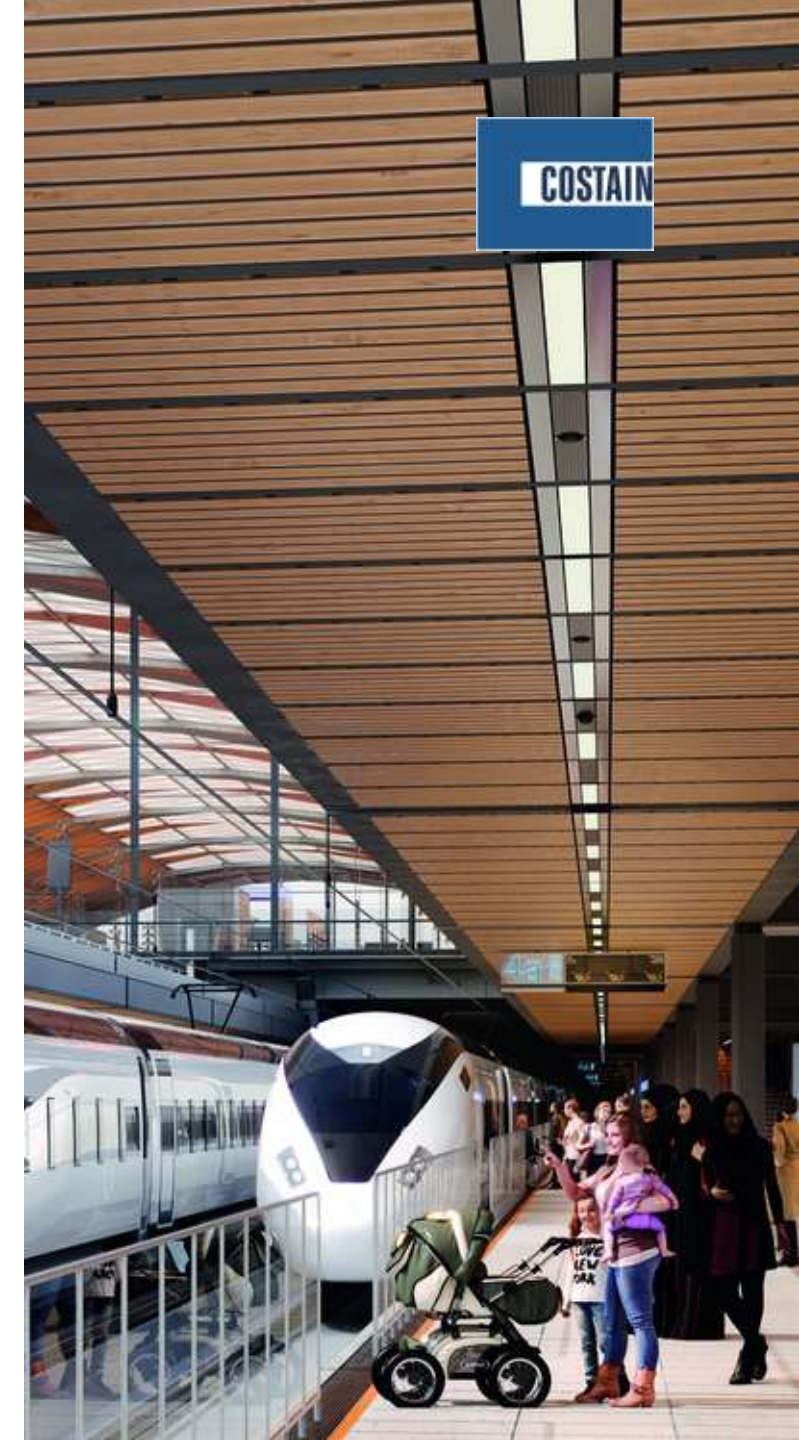
Reduction in audit cost due to standardised data feeds.

23,205+

Days of financial reporting saved per year across UK Transportations Capital delivery portfolio when automated data flows are used like the ones used to feed IICC.

64%

Reduction in IT costs due optimised data processing.



Proven technology



98% of the top 100 most valued brands in the world

81% of the worlds financial transactions processed



**CANADIAN
PACIFIC
RAILWAY**



COSTAIN

Thank you



[LinkedIn.com/company/costain](https://www.linkedin.com/company/costain)



[Twitter.com/costaingroup](https://twitter.com/costaingroup)



[Costain.com](https://www.costain.com)