



Project Controls

E X P O

Project Controls Expo – 13th Nov 2013 Twickenham Stadium, London

**Loading Cost and Activity data into Primavera - a
low cost, flexible tool for planners and
engineers.**



Project Controls
E X P O

Copyright © 2011. All rights reserved

legare
Get Connected

About David Kelly

- **IT consultant in project management systems**
- **37 years' experience in project planning for more that 30 years in offshore oil, construction, and engineering.**
- **Vast practical experience of Primavera and a deep knowledge of systems**
- **Influential in the design of Legare**

Two Acronyms - CPI:

The Planners **CPI** – that is Crap/Planning index – how long do you spend on typing, begging for information, reformatting the information prior to input, checking that what you typed was what you thought you typed, as opposed to actually planning?



Two Acronyms - KPI:

Only one **KPI** for project controls

How long is it from the data date cut-off to the new bar-chart?



Integration:

- Why - The failure of object oriented databases in the late 1990's.
- What – Almost all P6 data starts somewhere else
- When – Real time updating? What about the Data Date?
- Who – Collabro's “Legare” is a universal bi-directional interface



**Two examples of
Integration with
Legare :**

- Petrofac – Offshore Construction and Maintenance
- Heathrow – an airport in south Englandshire



Creating a new Project Controls Environment



Petrofac

Oracle's EBS and P6 being installed at the same time

Heathrow



Huge, multi-database P6 environment



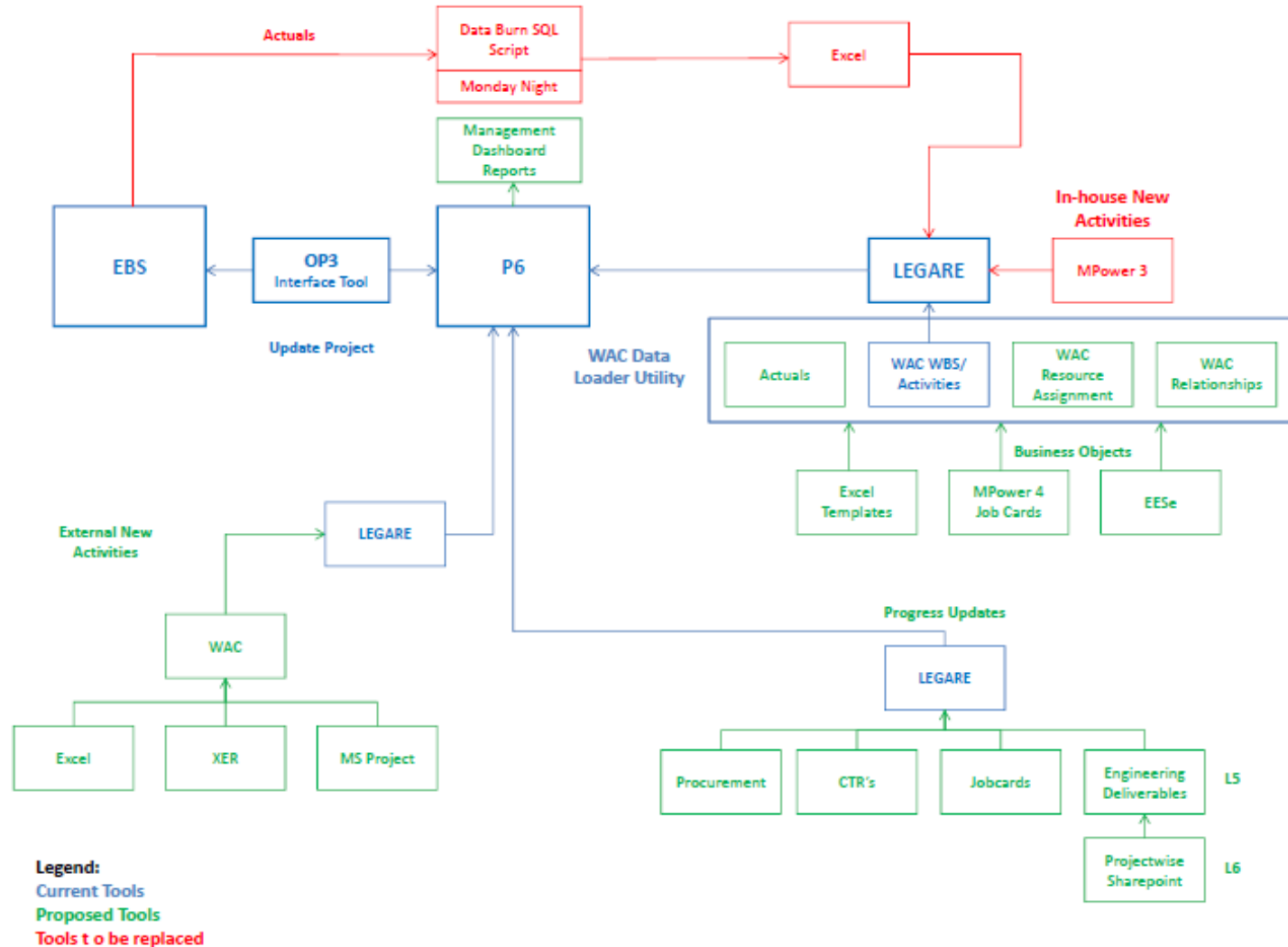
Petrofac – The Legacy

data load:

- 40,000 activities in 40 projects
- 500 activity code dictionaries.
- Recalculate relationship lag.
- Renumbering activities and WBS
- From data dump to nightly job
- Now what?



Petrofac 



Heathrow:

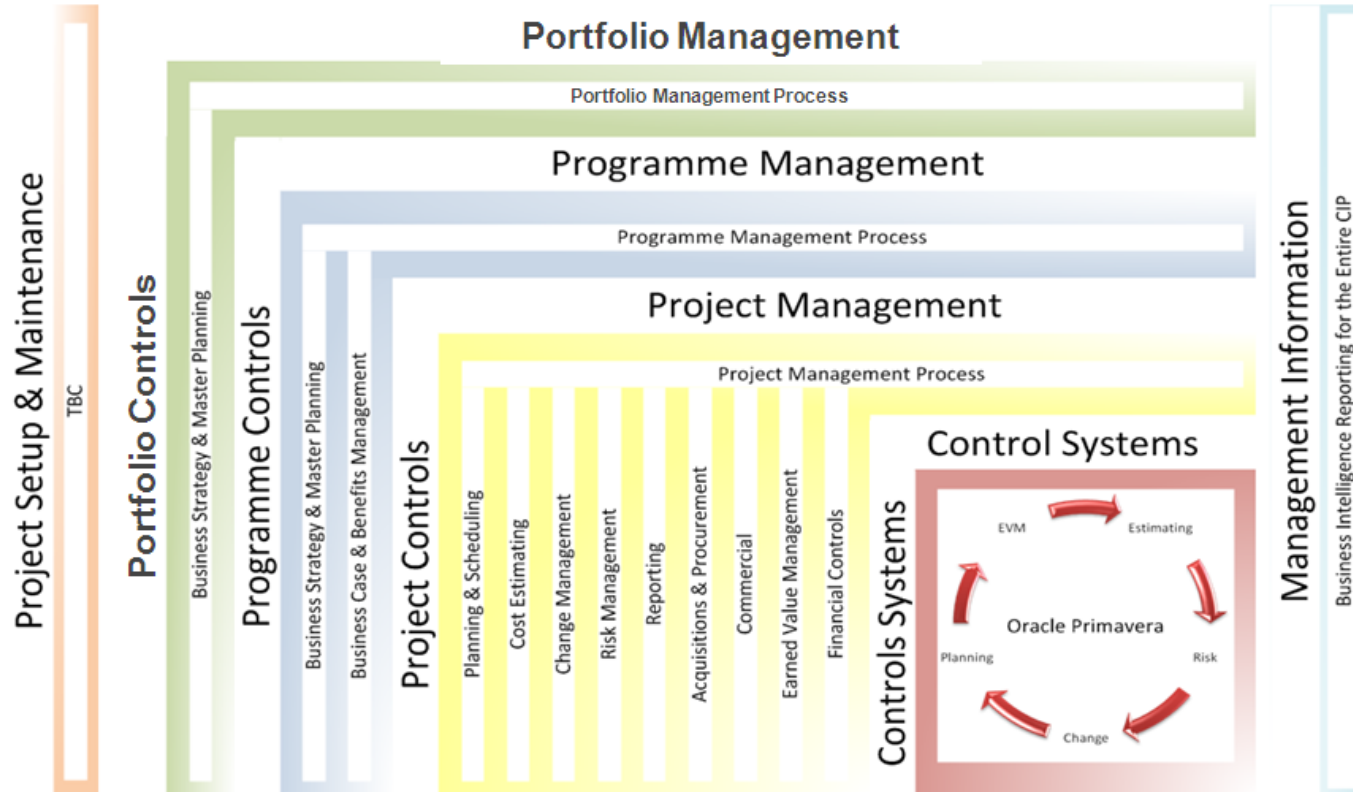
- **Huge implementation of P6 to replace legacy system**
- **Two P6 databases, one for MSP (contractor) projects, one for Heathrow Project controls**
- **This was a big job. I was involved in delivering a share of the 1500 student days of training prior to go live.**
- **As with Petrofac, there was a huge legacy data issue. HAL chose a bespoke solution.**



Heathrow 
Making every journey better.

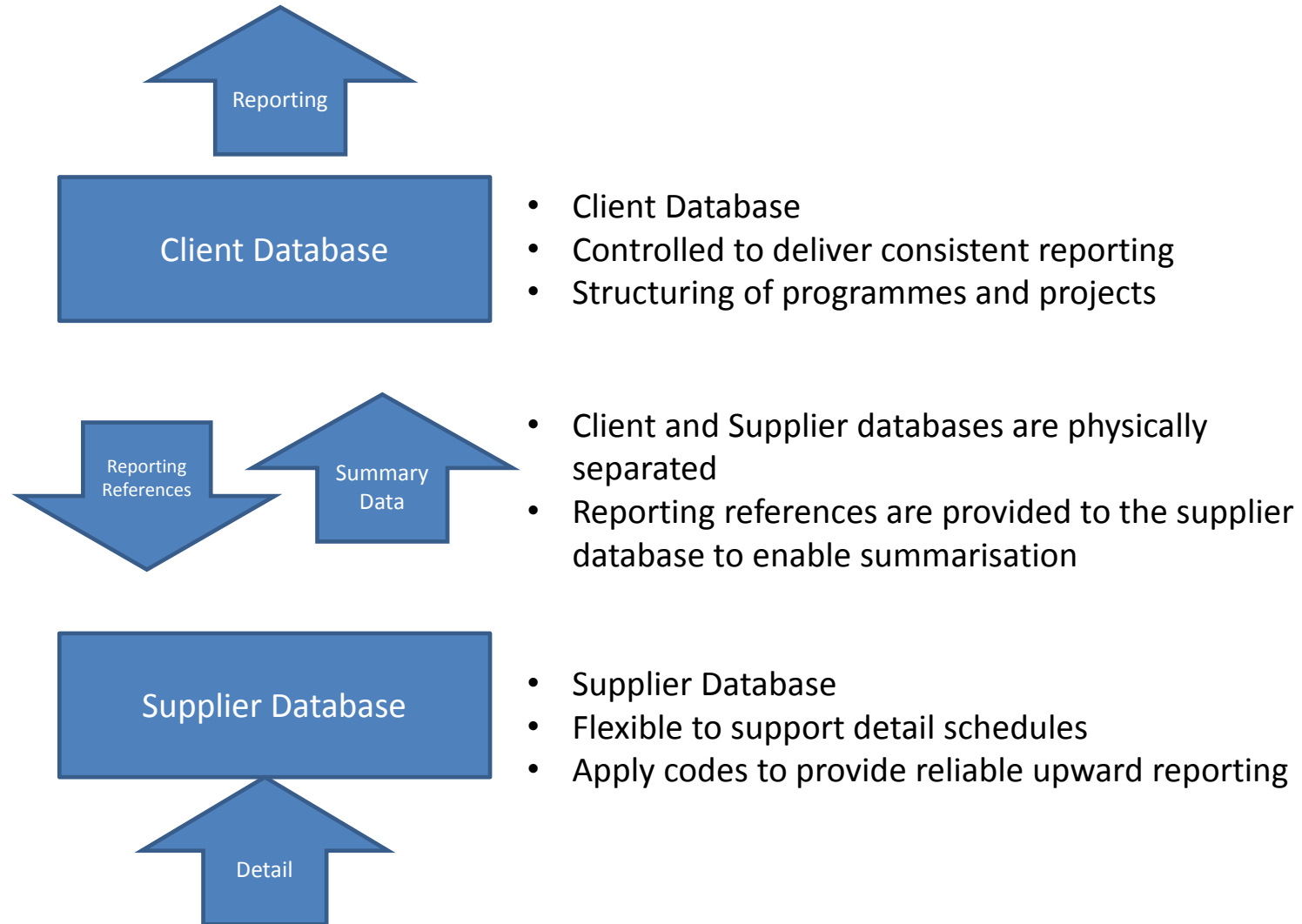
Tranche 1 (Live 17th June 2013)

Programme Controls

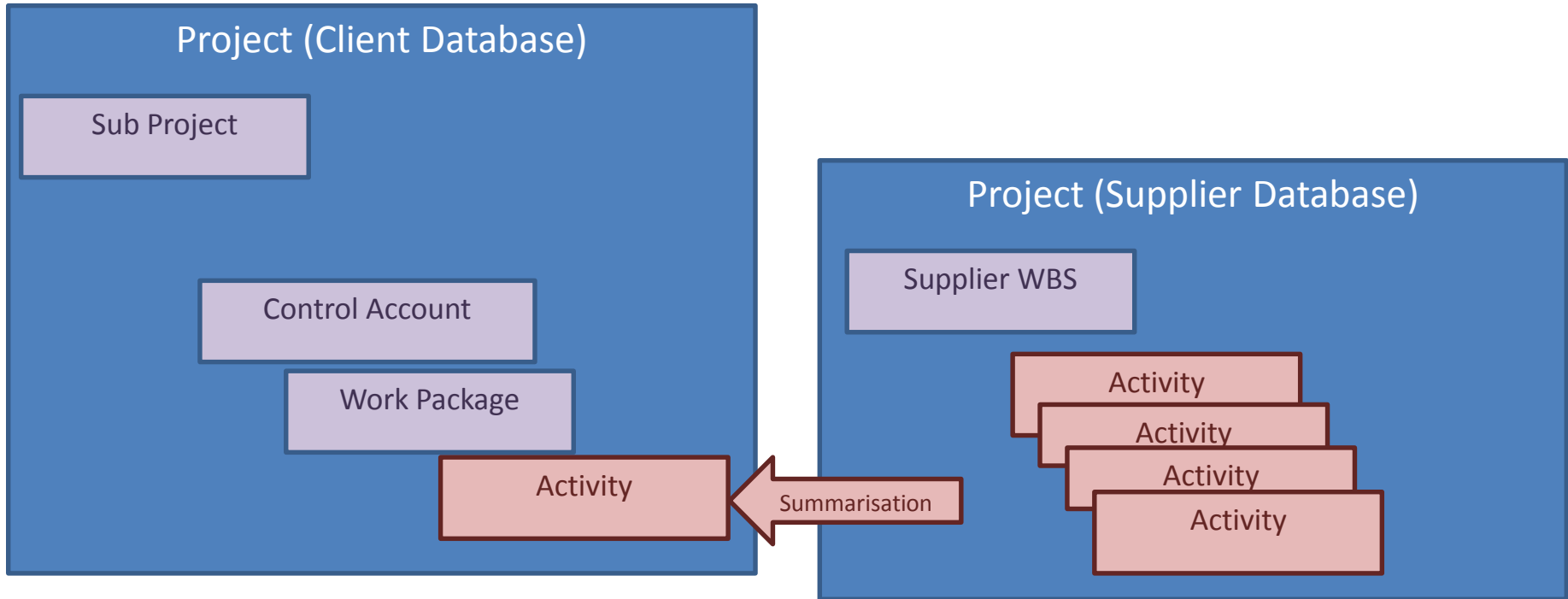


- PPM Standalone
- P6 EPPM
- Legare
- PRA
- BI Publisher
- P6 Analytics
- GlobalView Data Archive (detailed historical data)

Supplier & Client Databases



Summarisation



Business Requirement

- **Load resource profile updates**
- **Data sources:**
 - **P6 EPPM Client database**
 - **P6 EPPM Supplier database**
 - **Other external data sources (Excel spreadsheets)**
- **Target databases:**
 - **P6 EPPM Client database**
 - **P6 EPPM Supplier database**
- **Volumes:**
 - **Circa 1401 live projects in P6 EPPM Client, sourced from multiple supplier schedules/spreadsheets**
 - **Circa 31501 work packages across the live projects**
 - **Typically 1-2 resource assignments per work package**
- **Frequency:**
 - **Primarily at month end, with ad-hoc use through the month**

Well defined interface between them...



Heathrow:

- **Two integrations left to do**
- **Day to day cost loading**
- **Legacy data**



Heathrow 
Making every journey better.

Heathrow – Cost Loading:

- **Examined 3 alternatives:**
 - Bespoke solution (leveraging investment in a non-BAU migration cost loader)
 - Legare
 - Excel based solution developed by an MSP



Heathrow – Cost Loading:

Evaluation Criteria:

- **Functionality**
- **Flexibility**
- **Support Capability**
- **Affordability**
- **Timeliness of Deployment**



Heathrow 
Making every journey better.

Cost Loader Demonstration



Heathrow – What next:

Legare was so successful that:

- Bespoke development was halted
- Legacy data moved by Legare



Heathrow 
Making every journey better.

What Everybody Asks

What Does Legare do?

Who is using it?

How Much Does it Cost?

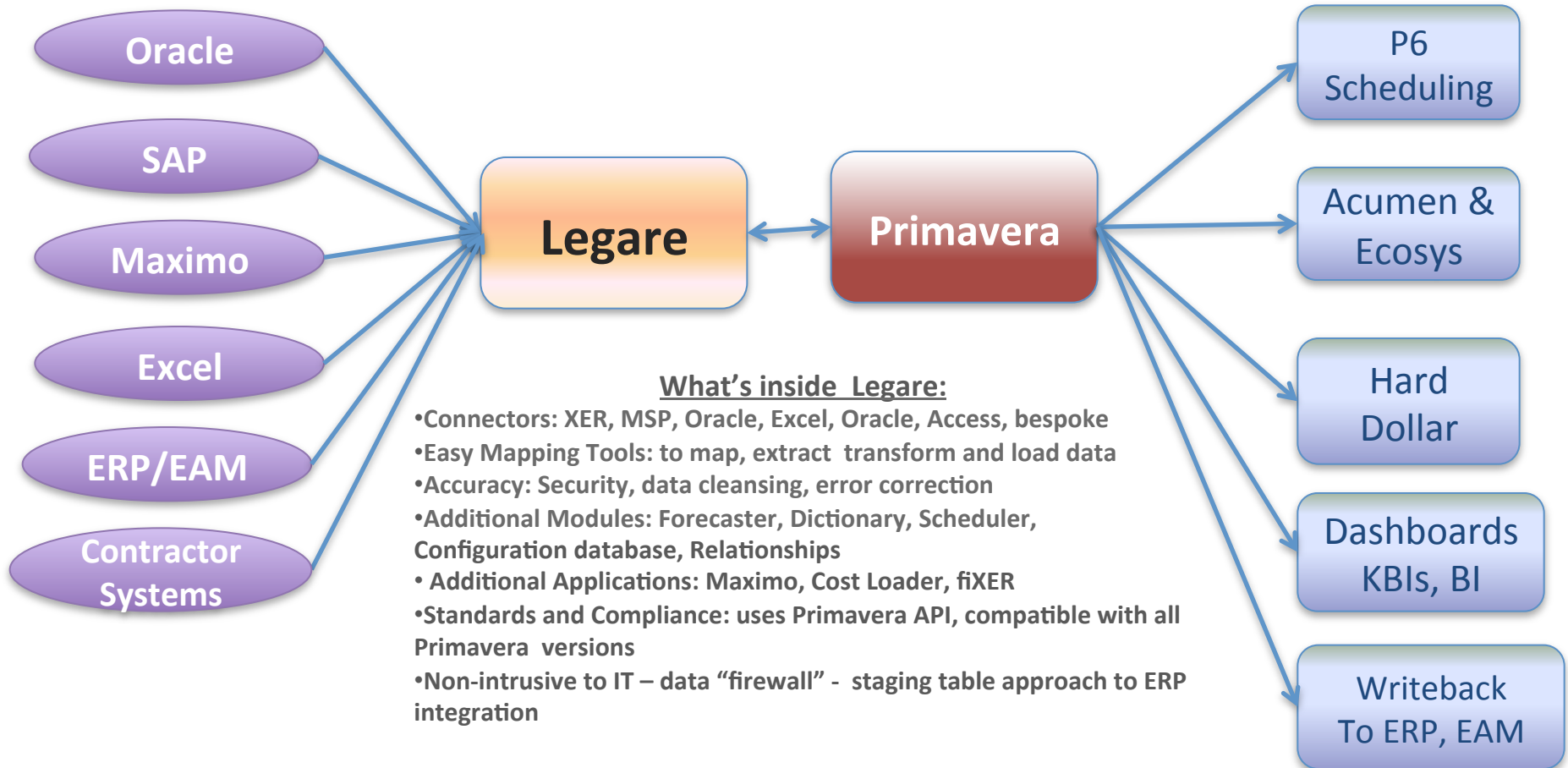
How Much will it save me?

What Legare Does

- Loads most types of data from any source into P6
- Quicker & more accurately than people or other systems
- Automates all Extract Transform, Load and error checking
- Exports accurate, “cleansed” data for
- Integrated Planning, risks, cost reporting Dashboarding
e.g. Acumen, Ecosys, Hard Dollar, P6
- Write back to ERP, EAM and operational systems
- Cheaper and faster than people or other tools

Where the data comes from

What it's used for – Integrated Planning



Typical uses of Legare

- **Chevron:** Importing XER and Excel files from Contractor to build an Integrated Activity Plan, Saved one day planner time per week, ie 20%.
- **Maximo User:** Integrated plan Maximo to P6. Saved one planner day/week
- **EPC Contractor:**
 - Migrated data from bespoke contractor WMS to Primavera. **50 projects, 50,000 activities, 500 activity code dictionaries, 12,000 resource IDs to re-map**
 - Legare interface to Oracle Projects. **WBS build reduced from 4 hours to 33 minutes**
- **Large Airport Construction:** Hundreds of users **bucket loading cost profiles** using financial periods in Primavera. Now Looking at XER, **Risk Loading** for P6.8, Oracle EBS links.
- **Downstream Oilco:** Importing XER, Excel data from estimators, contractors and corporate SAP (**10,000 actuals per week**). Also removed unwanted data from XER, mapping codes to P6.
- **Water utility:** SAP, Business Objects user, **reduced by 20% time spent by 4 people manually cutting and pasting into P6**. Legare (3 users) cost inc. implementation £20k. ROI in 2 months
- **Energy Utility:** uses Legare to extract and load calculated P6 data to Cobra , Cognos, etc

Legare Cost and ROI

- Typical time **saving is one day per planner per week = 20%**
- One Legare user licence costs £5,000: 5 cost £22,000
- One Cost Loader licence costs £1,500: 5 cost £6,000
- Annual Support = 20% of list price
- Typical customer internal business cases: pay back in **less than 3 months**

Why Legare ?

Primavera Data Integration: There are alternatives!					
	Manual Entry into Primavera	PV Native Excel Import	Bespoke Solution	Gateway Toolset	Legare®
Cost Effective	X		X	?	✓
Good use of skilled planning resources	X		X	✓	✓
Flexible	✓	X			✓
Accurate				✓	✓
Ensure data integrity	✓	X		✓	✓
Complete audit trail		✓			✓
Fully supported	✓	✓	X		✓
No specialist skills required	✓		X	X	✓

- Low Cost
- Low Risk
- Ease of use
- Supported
- Future proof
- Uses the Primavera APIs

Introduction to Collabro

- We provide collaborative services for 70+ Oil and Gas companies UK and Worldwide.
- Offshore personnel logistics (Vantage POB), environmental reporting & project management.
- Legare[®] developed to meet a need for simple integration to Primavera. Vantage POB/Legare link planned.
- Worldwide partner network.



Thank You & Questions?

info@collabro-legare.com

www.collabro-legare.com

